

Playing the 200kHz down looking recording back on your PC using YellowFin:

A typical SI recording consists of a .DAT file with a filename like R00172.DAT and an associated folder named similarly R00172. In this folder there are .IDX and .SON files i.e. B001.IDX, B001.SON, B002.IDX, B002.SON, B003.IDX and B003.SON.

B001 is the 200 kHz down looking recording

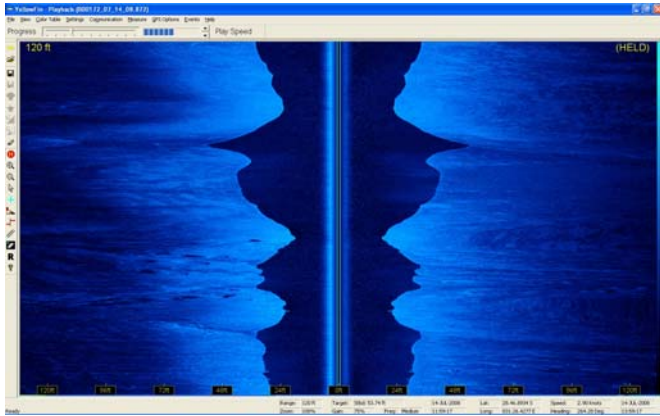
B002 is the 455kHz left SI recording

B003 is the 455 kHz right SI recording

Original:

Left: Port SI

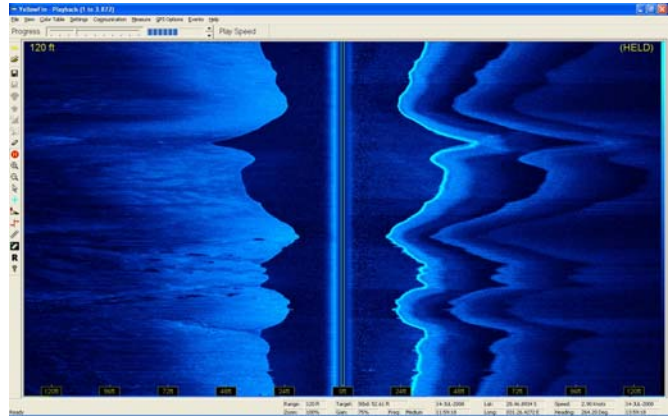
Right: Starboard SI



Converted B001 to B003 and B003 to B001:

Left: Port SI

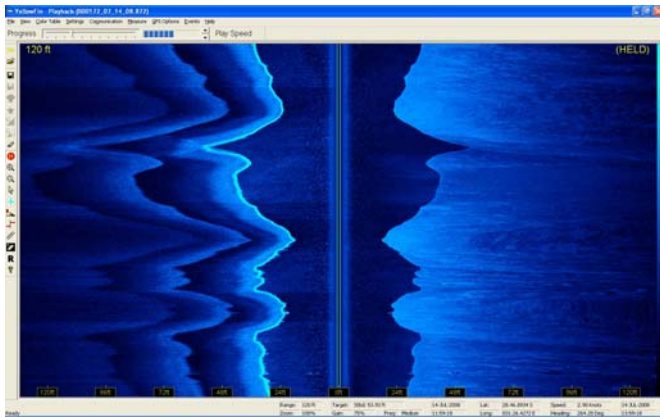
Right: 200kHz down



Converted B001 to B002 and B002 to B001:

Left: 200 kHz down

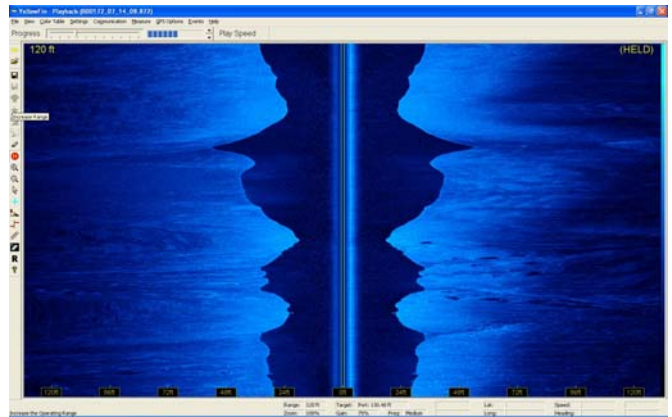
Right: Starboard SI



Converted B002 to B003 and B003 to B002:

Left: Starboard SI

Right: Port SI



Now if you take the recording and rotate it, it looks like a 'normal' fishfinder:-

